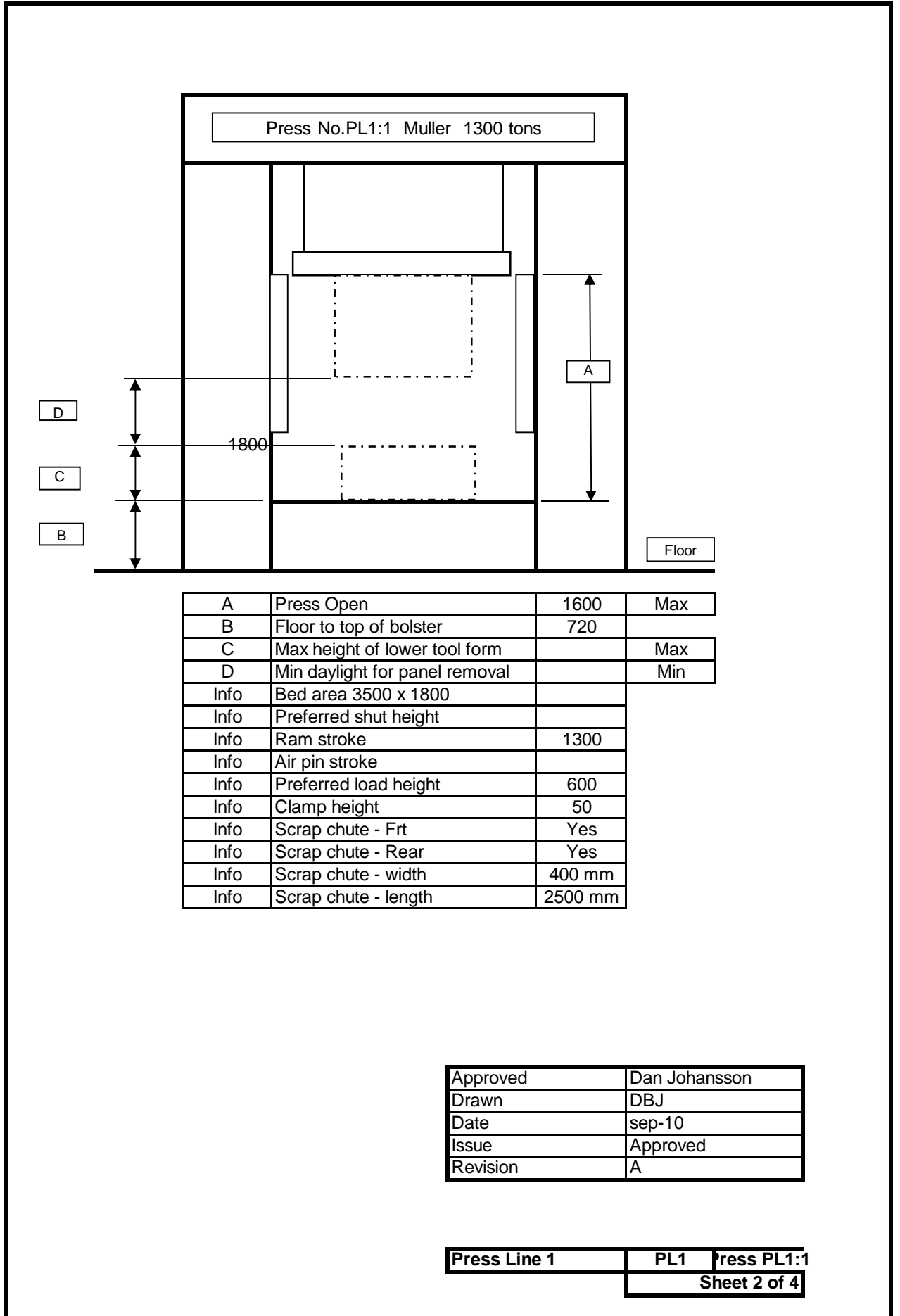


Description	Muller 1300T S/A
-------------	------------------

Type	Hydraulic
Year of Manufacture	1970 rebuild 1991
Number of Presses	One
Type	BZE 1300-35.1.1
Capacity of Ram	1300 tons
Stroke of Ram	1300
Ram Area (L-R x F-B)	3500 x 1800
Ram Tee slot off set from C/L	225
Ram Tee Slot Centres	300
Number of slots on ram	12
Ram Tee Slot width	32
	1800
Maximum Press day light	1600
Minimum Press day light	300
Maximum tool shut height	
Bed Area (L-R x F-B)	3500 x 1800
Bed Tee slot off set from C/L	225
Bed Tee Slot Centres	300
Number of slots on Bed	12
Bed Tee Slot width	32
Bed Height from Floor	720
Cushion Capacity	350 tons
Number off Cushion & Stroke	(1) 300
Cushion Area (L-R x F-B)	2742 x 1542
Cushion pin centres	150 Sqr
Cushion pin holes diameter	50
	-
Approach speed	500mm / Sec
Maximum Working Speed	130mm /Sec
Working Speed at Maximum	22mm / Sec
Cushion Speed	Up to 300mm / Sec
Maximum Tool Weight	30 tons
Note	
Press is used as an single action with the Inner and Outer ram locked (i.e. 1300 tons)	
All information is based on this condition	

Approved	Dan Johansson
Drawn	DBJ
Date	sep-10
Issue	Approved
Revision	A

Press Line 1	PL1	Press PL1:1
		Sheet 1 of 4



Press No.PL1:1 Muller 1300 tons

D

C

B

1800

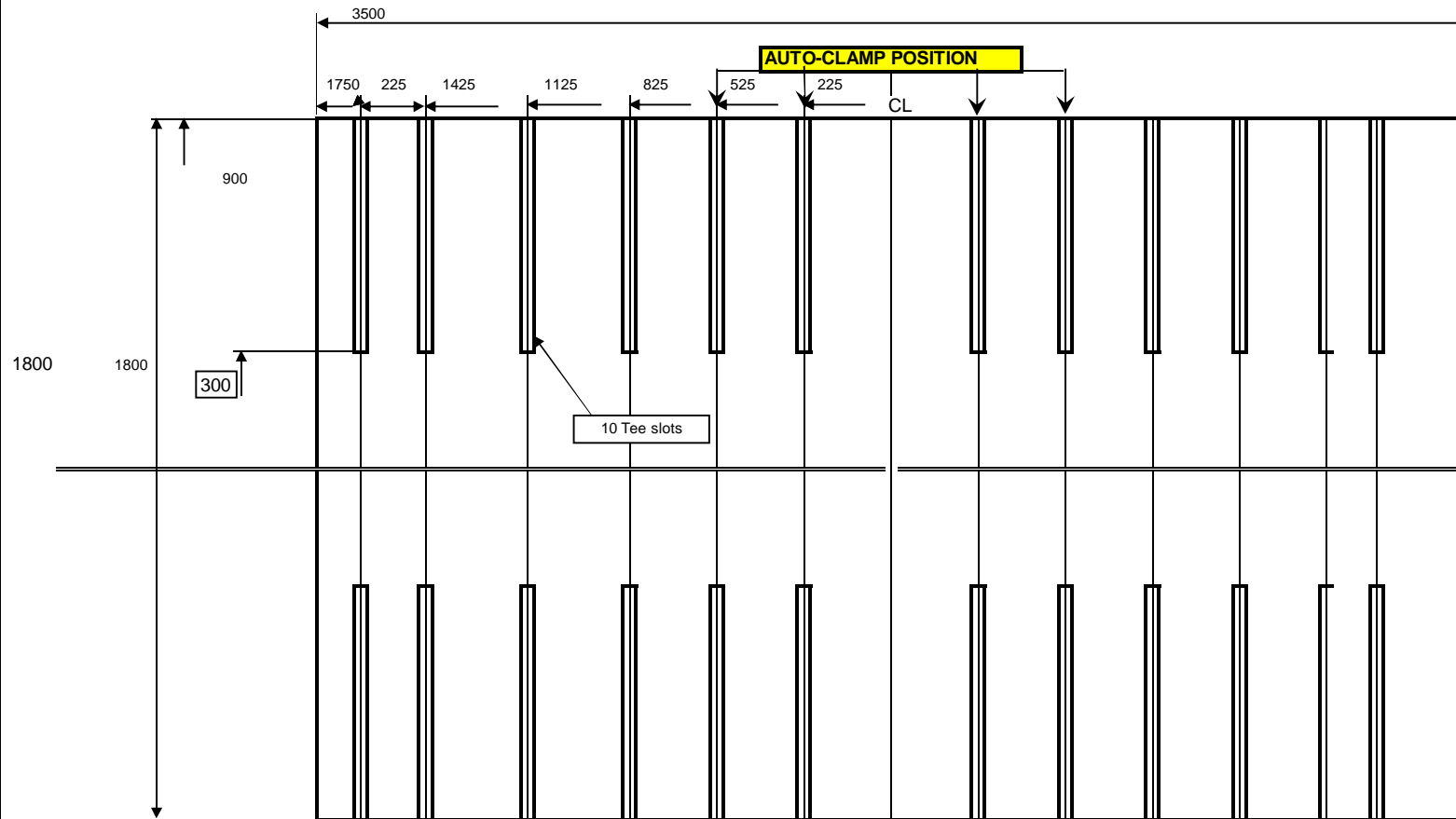
A

Floor

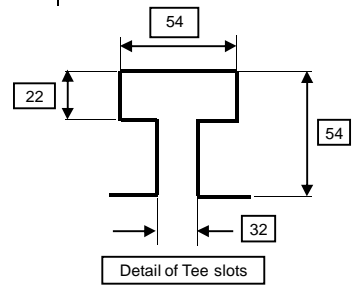
A	Press Open	1600	Max
B	Floor to top of bolster	720	
C	Max height of lower tool form		Max
D	Min daylight for panel removal		Min
Info	Bed area 3500 x 1800		
Info	Preferred shut height		
Info	Ram stroke	1300	
Info	Air pin stroke		
Info	Preferred load height	600	
Info	Clamp height	50	
Info	Scrap chute - Frt	Yes	
Info	Scrap chute - Rear	Yes	
Info	Scrap chute - width	400 mm	
Info	Scrap chute - length	2500 mm	

Approved	Dan Johansson
Drawn	DBJ
Date	sep-10
Issue	Approved
Revision	A

Plan View Of Ram



All slots are symmetrically opposite

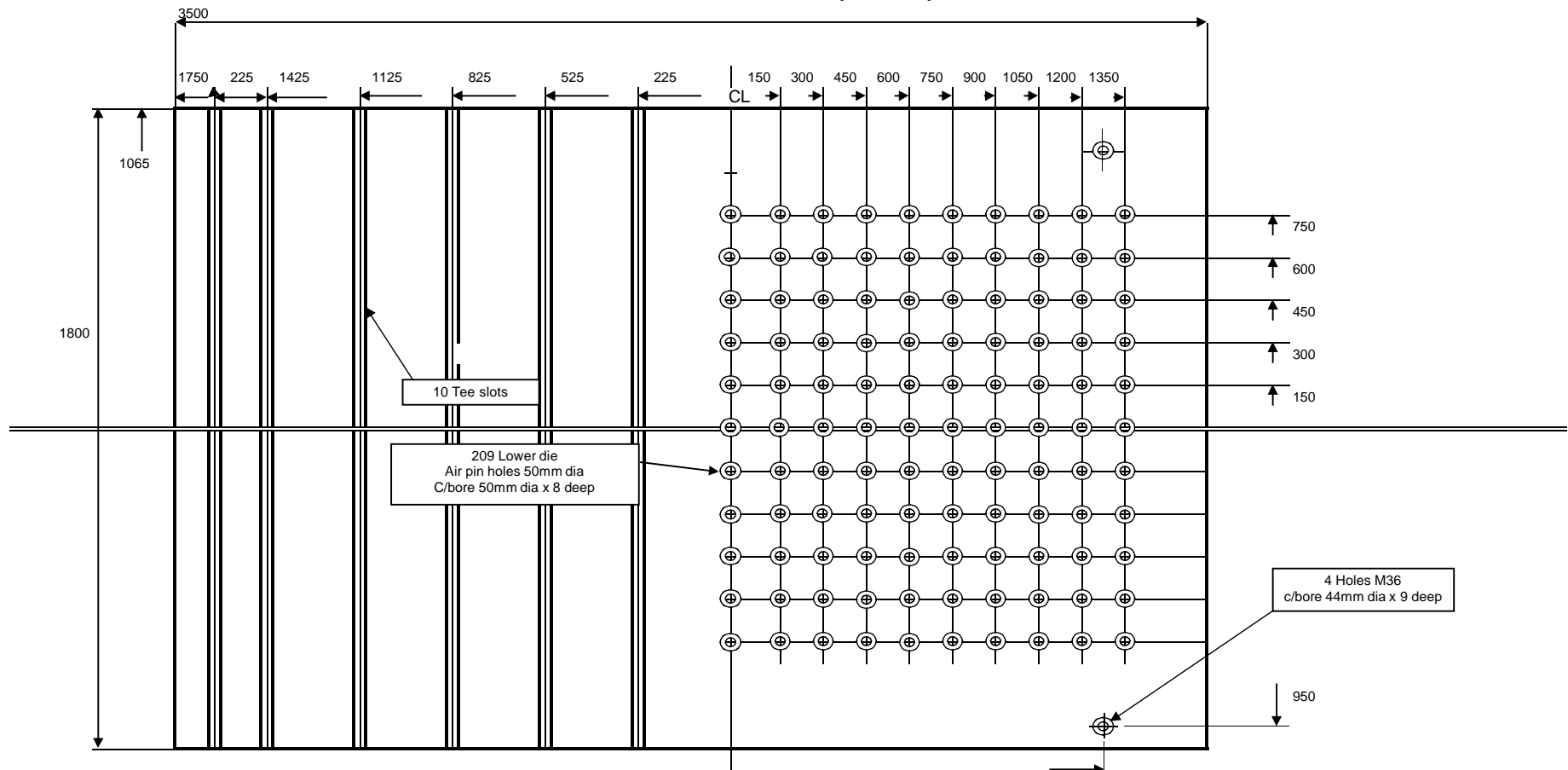


Detail of Tee slots

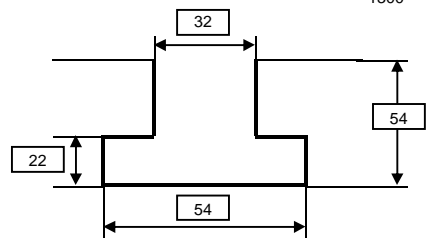
Approved	Dan Johansson
Drawn	DBJ
Date	sep-10
Issue	Approved
Revision	A

Press Line 1	PL1	Press PL1:1
		Sheet 3 of 4

Plan View Of Bolster (300mm)



All holes and slots are symmetrically opposite



Detail of Tee slots

Approved	Dan Johansson
Drawn	DBJ
Date	sep-10
Issue	Approved
Revision	A

Press Line 1	PL1	Press PL1:1
		Sheet 4 of 4